

SWINDON TOWN

FOOTBALL CLUB

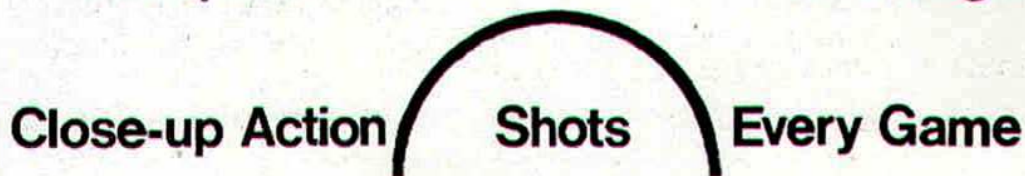
official programme



1/-



Complete Comprehensive Coverage



At home or away

The Evening Advertiser
has it covered

M^cILROYS

the Department Store
with that something extra *Service!*

Free

DELIVERIES
ESTIMATES ON CARPETS & CURTAINS
CARPET FITTING

WILLIAM McILROY (Swindon) LTD.

Tel. 5294



SWINDON TOWN FOOTBALL COMPANY LIMITED

Registered Office: COUNTY GROUND, SWINDON

President: Mr. W. J. CASTLE

Vice-President: Mr. J. DAVIES

Directors:

Chairman: Mr. H. E. LANE

Vice-Chairman: Mr. R. FRICKER

Messrs. F. L. COLLINGS, A. W. DONE, M. EARLE, C. J. GREEN, F. PLYER,
H. WILLIAMS, K. H. WILMER and Dr. J. NICHOLAS

General Manager: Mr. R. A. MORSE

Team Manager: Mr. F. FORD

SATURDAY, 6th DECEMBER, 1969

Division II

SWINDON TOWN v BRISTOL CITY

Kick-off 3 p.m.

| SWINDON TOWN | BRISTOL CITY | OFFICIALS |
|---------------------------|-------------------|--|
| 1 Downsborough | 1 Gibson | REFEREE: Mr. T. H. Reynolds (Swansea) |
| 2 Thomas | 2 Jacobs | |
| 3 Trollope | 3 Drysdale | |
| 4 Butler | 4 Tainton | |
| 5 Burrows | 5 Rooks | |
| 6 Harland | 6 Parr | |
| 7 Heath | 7 Sharpe | |
| 8 Smart | 8 Garland | |
| 9 Horsfield | 9 Bush | |
| 10 Noble | 10 Kellard | LINESMEN: |
| 11 Rogers | 11 Bartley | Red Flag: Mr. K. Sweet (Aberdare) |
| 12 | 12 Merrick | Yellow Flag: Mr. T. Jenkins (Swansea) |
| Colours: Red and White | Colours: White | |

G. A. Streetly

Tobacconist and Confectioner

10 BOURNE ROAD
MOREDON SWINDON
Telephone 4956

C. Goodenough and Sons

Removal and Storage Contractors
any distance

25 Cricklade Street Swindon
Telephone 4555 and 3855

CECIL GREEN

Artistic Decorations in all its branches

12 Armstrong Street
Swindon Wilts
Telephone 4593

W. J. SELWOOD

Telephone Swindon 5884

Saddlery

General Leather Goods Manufactured and
Repaired to Your Individual Requirements

103 BROAD STREET
SWINDON WILTSHIRE

Notton's Cafe

COUNTY ROAD

200 yards from Ground

Perfect meals at all times

For High Class
Central Heating, Plumbing
Painting and Decorating
Electrical Installations
and Repairs

NORTH WILTS Sanitary and Heating Co. Ltd.

NEWPORT STREET SWINDON
Telephone 5373/4



THE ALCOMOL FUEL

COATE GARAGE

REPAIRS - OVERHAULS - WELDING
SERVICING - REBORING - TYRES

Props. E. V. & W. H. Mattick
Marlborough Road Swindon

Leese, Ing & Co. Ltd.

Mineral Water and
Squash Manufacturers

LANSDOWN ROAD SWINDON

Telephone 22744

Maylott Studios

For Group and Sports Photographs

Official Photographer to
Swindon Town Football Club

31 Faringdon Road
Telephone 22792

Always at your service

L. Bibby

For all Types — Rags, Iron and Metal, etc.
Spot Cash Paid. Please Telephone 2101
and our van will call.

THE PADDOCK ERMIN STREET
STRATTON ST. MARGARET

news & views

Today we welcome to the County Ground our near neighbours, friends, and rivals, Bristol City. What memories and drama will that name recall to many of our supporters. Too long have we missed the pleasure of playing against this grand club, with its fine tradition and great achievements.

The two clubs last played each other in season 1962/63 in Division 3. At the end of that year Swindon gained promotion to Division 2. Unfortunately in 1965 Swindon was relegated, but on the other hand Bristol won promotion.

There was quite a similarity about the last two games played. At Bristol on Saturday, 13th October, 1962, Swindon led by two goals to nil (the first goal was scored from the penalty spot). Final result was a draw, 2—2. In the return game played at Swindon on Saturday, 2nd March, 1963, five minutes after half-time our opponents were leading by two goals to nil. Final result — Swindon 3, Bristol City 2.

At the time of this game Swindon occupied first position in the League with the following record: played 28; won 12; drew 10; lost 6; goals for 55, against 34; points 34. Bristol City (14th position): played 27; won 9; drew 8; lost 10; goals for 58, against 55; points 26. Notice the number of goals scored by each team. The teams which played on 2nd March make rather an interesting comparison. Swindon Town: O'Hara; Dawson, Trollope; Morgan, Macpherson, Woodruffe; Summerbee, Hunt, Smith, Jackson, Darcy. Bristol City: Nicholls; Briggs, Thresher; Parr, Connor, Etheridge; Tait, Clark, Atyeo, Williams B., Derrick.

Of the Swindon team O'Hara, Morgan, Macpherson, Smith and Darcy are no longer in professional football, Dawson and Trollope are still on the books of the Club, Woodruffe was transferred last week from Crystal Palace to Cardiff City, and three are with Division 1 clubs — namely, Summerbee (Manchester City), Hunt (Coventry City) and Jackson (Crystal Palace).

In the Bristol team Nicholls (recently injured playing for Charlton Kings), Thresher, Tait and Atyeo are out of professional football, Etheridge is player-manager of Cheltenham Town, Briggs, Parr, Connor and Derrick are still on the books. Clark plays for Cardiff City and Williams (Shino) plays for Reading.

We trust many will derive real enjoyment from today's game, but we know two for whom the match will give great pleasure. We are not quite sure where their support will lie. Mr. Ford was of course the manager of Bristol City when the teams last met. Today he is on the other side. I wonder what is passing through his mind? The other person also has strong connections with the City, yet in many ways we look upon him as one of our finest and most loyal supporters, Mr. G. Whittock. He certainly never misses any of our midweek games be they at Swindon or elsewhere, and he was probably the most delighted man at Wembley. In another part of the programme we pay tribute to a faithful servant of Swindon Town. It is rather appropriate to record that on the last occasion when Bristol City played at Swindon Mr. A. S. Davies, our Assistant Secretary, retired after some 45 years service. Today he is still working hard for the welfare of the Club, in what is really a voluntary capacity.

THE GREAT WESTERN HOTEL

(OPPOSITE SWINDON RAILWAY STATION)

The business man's hotel with a top class
steak bar too!

Specialists in
LUNCHEONS and DINNERS
WEDDING PARTIES and RECEPTIONS
good food — quick service

J. ARKELL and SONS LIMITED Telephone SWINDON 22047

Mills and Merricks Limited

16-17 Bridge Street Swindon

Telephone 5365/6

"HOME OR AWAY"

our function is to ensure that your home is
tastefully and economically furnished

SWINDON'S COMPLETE HOUSE FURNISHERS

New City Office Supplies Limited

Office and Stationery Suppliers
to Industry and Commerce
6 Commercial Road Swindon
Telephone Swindon (STD Code 0793) 4605



CLARK BROS. (Swindon) LTD

Building and Civil Engineering Contractors

CONSULT US FOR
BUILDING AND CIVIL ENGINEERING
CONSTRUCTION IN ALL ITS PHASES

STRATTON ROAD

SWINDON

Telephone Swindon 27261

Supporters' Club Notes

Today, John Trollope runs on to the pitch to play his 400th match for Swindon Town's first team. To play that number of League and Cup-ties in a career in League football is a noteworthy achievement. To this, add the fact that the feat was achieved with one Club only, makes it all the more notable. Include in this the Football League Cup Final and the winning of the first League Cup Winners trophy against Roma, earlier this season, plus, I believe, 29 goals from the full-back position—very few being penalties—and supporters cannot fail to appreciate the great service John has given to Swindon Town. Active Supporters' Club members who attend our regular functions will not have failed to note that John — accompanied by his charming wife in recent years — is always amongst those present. A club man of the highest order, we must all hope that, one day soon, his professionalism will be rewarded by selection into the highest representative games. On behalf of all supporters here today, may I say "Thanks, John, for many hours of entertainment, and may you continue to excite us with those electrifying overlaps down the left wing".

Social Club members might note the Club entertainment over the next two weeks. Tonight, the usual Saturday night dance, marks the return of "The Utopia", a group from Devizes that proved very popular on the first visit a week or two back. Next Saturday, Ken Exton's Band will, I trust, play to celebrate a win over Oxford United. After Bingo tomorrow evening, Cliff Taylor provides dance music.

Plans for Xmas and the New Year are now well advanced, and a full programme will be included in the Notes for the Blackpool match on December 20th. We hope to continue with our previous policy of providing a traditional New Year's Eve with a Piper and formal introduction of the New Year, but the problem is to find a piper free for the evening. So, if anyone knows of a Scottish piper free on New Year's Eve, our Social Secretary would be delighted to know where he — or she — could be contacted.

A warm welcome today to supporters of Bristol City. We have seen many a keen contest, both here and at Ashton Gate, as one can expect from such near neighbours. Today, with Bristol City very much on the upsurge, and our lads still very much in touch with the top of the League and Division 1, we look forward to something more than a run-of-the-mill League game.

Face in the crowd – is it you?



In all future editions of this Season's programme we shall publish a photograph of a small section of the crowd at a previous match, one member of which will be clearly indicated by means of a circle. This person will be entitled to a free seat at the next match on producing the programme at the office.

WE AIM TO PLEASE — TRY US

Tunleys

(1)

Glass (2)

Wallpaper (3)

Paint (4)

Polishes (5)

Artist Materials (6)

Prints (7) Ladders (8) Mirrors (9) Brushes (10) Aladdin Heaters (11)

MEMBERS OF THE



12/13 Gloucester Street Swindon Wiltshire



throughout the West

you will find Bradley Estates beautifully situated to meet the requirements of modern living. If you are thinking about a new home and would like to receive full details of our current and planned estates write now to 74 Victoria Road Swindon Wiltshire. Please send me details of

- Green Meadow Estate, Swindon, Wiltshire
- Nythe Estate, Swindon, Wiltshire
- Monkton Park Estate, Chippenham, Wiltshire
- Park Hill Estate, Frome, Somerset
- Damory Down Estate, Blandford Forum, Dorset
- Harkwood Farm Estate, Poole, Dorset
- Roman Way Estate, Bourton-on-the-Water, Gloucestershire

Name.....

Address.....



BRADLEYESTATES

our visitors



BRISTOL CITY FOOTBALL CLUB

Season 1969/70

Formed in 1897, Bristol City joined the Football League in 1901, and won promotion to the Division 1 five seasons later, securing 66 points from 38 games. The following season the City were runners-up to Newcastle United for the League Championship — a feat they never repeated. After five seasons the Club were relegated and have never since played in Division 1. They hold the unenviable distinction of the longest consecutive period of League football without regaining Division 1 status.

In 1909, Bristol City reached the Cup Final, and were beaten by Manchester United by one goal to nil at Crystal Palace. At Stamford Bridge in 1919 they were the losing semi-finalists to Huddersfield Town by 2 goals to 1.

The following shows the see-saw between the Second and Third Divisions:

| | |
|---------|---|
| 1920/21 | Third in Division 2. |
| 1921/22 | Relegated to Division 3 (South). |
| 1922/23 | Champions Division 3 (South). |
| 1923/24 | Relegated. |
| 1926/27 | Champions Division 3 (South). |
| 1932/33 | Relegated from Division 2. |
| 1954/55 | Promoted to Division 2 with equal record number of points (70) from 46 games. |
| 1959/60 | Relegated to Division 3. |
| 1964/65 | Promoted to Division 2. |

In the first season back in Division 2, promotion was missed by a narrow margin, but this has been followed by three rather lean years.

Record attendance: v. Preston North End (F.A. Cup) 16/2/35 — 46,335.

Record receipts: v. Wolverhampton Wanderers (League) 28/12/65 — £7,302.

v. Bristol Rovers (F.A. Cup) 27/1/68 — £9,953.

Pen Pictures of Players

M. J. (MIKE) GIBSON (Goalkeeper)

Born Derby. Signed in April 1963 from Shrewsbury Town. Previously with Gresley Rovers and Nuneaton Borough. Has appeared in 252 League and 23 Cup games, including an unbroken run of 191 games before an injury in season 1967/68.

T. K. (TREVOR) JACOBS (Full-back)

Born Bristol. Reverted to amateur after 1½ years as apprentice professional. Resigned as professional in July 1965. League debut November 1966 versus Rotherham United. Injury robbed him of regular place in 1967/68. Appeared in 60 matches.

A. M. (ALEC) BRIGGS (Full-back)

Born Sheffield. Signed professional forms in May 1957. A strong tackler, has missed only 11 games in last eight seasons. Scored his only goal against Derby County in April 1968.

B. (BRIAN) DRYSDALE (Full-back)

Born Wingate, County Durham. First signed as an inside-forward with Lincoln City at the age of 17. Almost gave up the game but joined Hartlepool United and became automatic choice as left-back. Signed in close season from Hartlepool.

K. (KEN) WIMSHURST (Right-half)

Secured in October 1967 from Southampton, for whom he had played a leading part in their promotion side. Previously with Wolves.

G. J. (GORDON) PARR (Right-half or Left-half)

Bristol born. Signed part-time professional February 1957 while on engineering apprenticeship. Signed full-time after National Service. A strong tackler, reverted to full-back for eight matches in 1967/68 when three full-backs were injured. Has now appeared in 232 League and Cup games. Longest serving player.

G. (GERALD) INGRAM (Wing-half)

Born Merthyr. Was captain of Welsh Schoolboys and played two seasons as an amateur before signing professional forms last September.

DON ROGERS SPORTS
29 FARINGDON ROAD SWINDON

Telephone 27378

Main suppliers to Swindon Town Football Club

Stockists of

All leading makes of Football Boots and Clothing
Table Tennis, Badminton, Rugby and Hockey equipment

IN FACT THE COMPLETE SPORTS OUTFITTER

RIMES of SWINDON

POPULAR EXCURSION TO

| | | | Fare | |
|---------------------|----------|------------------|-------|-------|
| | | | adult | child |
| Sat., 13th December | OXFORD | Dept. 13.00 hrs. | 8/- | 6/- |
| Sat., 27th December | CHARLTON | Dept. 09.00 hrs. | 16/- | 10/9 |

SERVICE DIRECT TO THE GROUND
ALL SEATS NUMBERED AND RESERVED

Book now at

102 Commercial Rd., Swindon **46 Cricklade St., Cirencester**
Telephone 27113 Telephone 3479

or with any of Rimes Booking Agents

Dobell Shearman & Co. Ltd.

HIGH STREET SWINDON

Telephone 4961

FANCY and COMMERCIAL STATIONERS
TYPEWRITERS and OFFICE EQUIPMENT

Greetings Cards for all Occasions
from Leading Art Publishers



W. J. CASTLE

Office and Bakery

4 and 5 MARKET STREET
SWINDON

Telephone 22017

Specialists—

BIRTHDAY CAKES - WEDDING CAKES
DAIRY CREAM - PASTRIES
BUNS - ROLLS - SPONGES



OUR VISITORS (continued)

J. F. (JOHN) CONNOR (Centre-half)

Born Maryport, Cumberland. Signed from Huddersfield Town in 1960 and has now appeared in 393 League and Cup matches.

R. (RICHARD) ROOKS (Centre-half)

Born Sunderland. Signed for the local Club as professional after apprenticeship as a carpenter and joiner. Later transferred from Sunderland to Middlesbrough, playing 41 matches in Division 2 last season. Close season signing from Middlesbrough.

T. D. (TERRY) BUSH (Wing-half)

Born Ingoldisthorpe, Norfolk. Originally a centre-forward, signed direct from school, progressed through junior sides to debut in 1961. Appeared more often last season as left-half, has now played in 141 League and Cup games.

G. (GEOFFREY) MERRICK (Wing-half)

Born Bristol. Captained Bristol and England Boys. Signed apprentice professional on leaving school and full-time professional forms last August, but was injured in his second match in the first team.

T. K. (TREVOR) TAINTON (Left-half)

Born Bristol. 21 years old. Made League debut September 1967 versus Carlisle United.

J. S. (JANTZEN) DERRICK (Outside-right)

Born Bristol. Member of Bristol Boys Trophy winning team of 1957/58. Made his Division 2 debut six weeks prior to 17th birthday. Youth trialist. 277 appearances to date, scoring 35 goals.

C. S. (CHRIS) GARLAND (Inside-right)

Born Bristol. Ex-Bristol Boys player. Debut December 1966. Appeared in 61 League and 9 Cup games.

J. E. (JOHN) GALLEY (Centre-forward)

Joined City from Rotherham United to replace Hugh McIlmoyle (transferred to Carlisle). Scored 21 goals in 39 matches last season, teaming up well with Chris Garland.

R. S. W. (BOB) KELLARD (Inside-left)

Joined City from Portsmouth during summer of 1968 at record fee. Strong tackling and goal-scoring inside-forward, has been appointed captain. Previously with Southend United, Crystal Palace and Ipswich Town. Missed only one match during last season.

G. R. (GERRY) SHARPE (Inside left)

Born Gloucester. Signed March 1964. Has scored 33 goals in 102 appearances. Product of youth policy.

D. R. (DANNY) BARTLEY (Outside-left)

Born Paulton. Signed professional October 1964 on 17th Birthday. Capped in 1966 (Youth) and toured Yugoslavia with F.A. Youth Party during May 1966. 47 League appearances.

A. G. (ALAN) SKIRTON (Right-winger)

Born Bath. Played for Bath City before joining Arsenal. After long Division 1 experience transferred to Blackpool F.C., from whom he was transferred in November 1968.

M. MCQ. G. (MALCOLM) CLARKE (Wing-half)

Signed on free transfer from Cardiff City on July 1st. Born Glasgow. Appeared for Cardiff in European Cup tourney. Previous club Leicester City.

K. W. (KEITH) FEAR (Inside-forward)

Born Bristol. Bristol Schoolboy player and Glos. Youth F.A. captain, reaching semi-final Counties Championship. Played for England Senior Schools XI versus Wales 1969. Product City youth sides.

Division I I

Fixture List

1969

August

| | |
|----------------------|---------|
| 9 Blackburn Rovers | (A) 0—2 |
| 13 Cardiff City | (A) 2—2 |
| 16 Carlisle United | (H) 2—2 |
| 19 Cardiff City | (H) 2—1 |
| 23 Aston Villa | (A) 2—0 |
| 30 Charlton Athletic | (H) 5—0 |

September

| | |
|--------------------------|---------|
| 2 League Cup (2) Swansea | (A) 3—1 |
| 6 Blackpool | (A) 2—3 |
| 13 Oxford United | (H) 0—0 |
| 16 Middlesbrough | (A) 0—0 |
| 20 Queen's Park Rangers | (A) 0—2 |
| 24 League Cup (3) Oxford | (A) 0—1 |
| 27 Leicester City | (H) 1—1 |
| 30 Millwall | (H) 2—1 |

October

| | |
|---------------------|---------|
| 4 Bolton Wanderers | (A) 1—0 |
| 7 Carlisle United | (A) 2—2 |
| 11 Sheffield United | (H) 2—1 |
| 18 Hull City | (H) 1—0 |
| 25 Portsmouth | (A) 1—3 |

November

| | |
|----------------------|---------|
| 1 Norwich City | (H) 2—0 |
| 8 Birmingham City | (A) 0—2 |
| 15 Watford | (A) 0—0 |
| 22 Huddersfield Town | (H) 2—1 |
| 29 Preston North End | (A) 1—3 |

December

| | |
|----------------------|-----------|
| 6 Bristol City | (H) |
| 13 Oxford United | (A) |
| 20 Blackpool | (H) |
| 26 Aston Villa | (H) |
| 27 Charlton Athletic | (A) |

1970

January

| | |
|-------------------------|-----------|
| 3 F.A. Cup (3) | |
| 10 Queen's Park Rangers | (H) |
| 17 Leicester City | (A) |
| 24 F.A. Cup (4) | |
| 31 Bolton Wanderers | (H) |

February

| | |
|---------------------|-----------|
| 7 Sheffield United | (A) |
| 14 Blackburn Rovers | (H) |
| 21 Portsmouth | (H) |
| 28 Hull City | (A) |

March

| | |
|----------------------|-----------|
| 7 Huddersfield Town | (A) |
| 14 Preston North End | (H) |
| 21 Bristol City | (A) |
| 28 Watford | (H) |
| 30 Norwich City | (A) |
| 31 Birmingham City | (H) |

April

| | |
|------------------|-----------|
| 4 Millwall | (A) |
| 14 Middlesbrough | (H) |

Appearances

| Name | Div. II | Cup | | |
|--------------|---------|--------|----------|-------------|
| | | League | F.A. Cup | Winners Cup |
| Downsborough | 22 | 2 | | 2 |
| Thomas | 22 | 2 | | 2 |
| Trollope | 22 | 2 | | 2 |
| Butler | 22 | 2 | | 2 |
| Burrows | 21 | 2 | | 1 |
| Harland | 22 | 2 | | 2 |
| Smith | 11 (1) | 2 | | 2 |
| Horsfield | 21 | 2 | | 2 |
| Smart | 22 | 2 | | 2 |
| Noble | 19 | 2 | | 2 |
| Rogers | 16 | 2 | | 2 |
| Jones | 8 (5) | | | (1) |
| Blick | 1 (4) | | | 1 |
| Heath | 12 | | | |
| Down | (1) | | | |
| Penman | 1 | | (1) | |

(Playing as substitute in brackets)

Goalscorers

| Name | Div. II | Cup | | |
|-----------|---------|--------|----------|-------------|
| | | League | F.A. Cup | Winners Cup |
| Horsfield | 8 | | | 3 |
| Noble | 8 | 3 | | 1 |
| Rogers | 3 | | | 1 |
| Jones | 4 | | | |
| Smith | 1 | | | |
| Burrows | 1 | | | |
| Trollope | 1 | | | |
| Thomas | 1 | | | |
| Smart | 2 | | | |
| Opponents | 1 | | | |

League Table – Division II

(up to and including Tuesday, 2nd December, 1969)

| | P | W | D | L | F | A | P |
|----------------------|-----------|----------|----------|----------|-----------|-----------|-----------|
| Huddersfield Town | 21 | 12 | 5 | 4 | 37 | 20 | 29 |
| Blackburn Rovers | 22 | 12 | 5 | 5 | 31 | 19 | 29 |
| Sheffield United | 22 | 12 | 3 | 7 | 42 | 18 | 27 |
| Leicester City | 21 | 10 | 7 | 4 | 35 | 25 | 27 |
| Queen's Park Rangers | 22 | 11 | 5 | 6 | 42 | 30 | 27 |
| Swindon Town | 22 | 9 | 7 | 6 | 30 | 26 | 25 |
| Middlesbrough | 21 | 10 | 4 | 7 | 25 | 24 | 24 |
| Blackpool | 22 | 9 | 6 | 7 | 27 | 29 | 24 |
| Bristol City | 21 | 9 | 5 | 7 | 29 | 22 | 23 |
| Cardiff City | 20 | 8 | 6 | 6 | 32 | 22 | 22 |
| Birmingham City | 21 | 8 | 6 | 7 | 26 | 26 | 22 |
| Carlisle United | 22 | 7 | 6 | 9 | 27 | 31 | 20 |
| Preston North End | 22 | 6 | 7 | 9 | 23 | 24 | 19 |
| Oxford United | 21 | 6 | 7 | 8 | 18 | 22 | 19 |
| Norwich City | 21 | 8 | 3 | 10 | 17 | 25 | 19 |
| Charlton Athletic | 21 | 4 | 10 | 7 | 18 | 36 | 18 |
| Bolton Wanderers | 23 | 6 | 5 | 12 | 32 | 39 | 17 |
| Hull City | 21 | 7 | 3 | 11 | 28 | 36 | 17 |
| Portsmouth | 21 | 5 | 7 | 9 | 25 | 40 | 17 |
| Millwall | 20 | 4 | 8 | 8 | 21 | 32 | 16 |
| Aston Villa | 22 | 4 | 8 | 10 | 18 | 31 | 16 |
| Watford | 21 | 4 | 5 | 12 | 23 | 29 | 13 |

SATURDAY, 13th DECEMBER, 1969

Football Combination

SWINDON TOWN v. LEICESTER CITY

Kick-off 3 p.m.

SATURDAY, 20th DECEMBER, 1969

Division II

SWINDON TOWN v. BLACKPOOL

Kick-off 3 p.m.

FRIDAY, 26th DECEMBER, 1969

Division II

SWINDON TOWN v. ASTON VILLA

Kick-off 3 p.m.

Previous Matches

DIVISION II

SATURDAY, 22nd NOVEMBER, 1969

Beat Huddersfield Town (home) 2—1.

Team: Downsborough; Thomas, Trollope; Butler, Burrows, Harland; Heath, Smart, Horsfield, Noble, Jones. Sub. Smith.

Scorers: Noble, Jones.

Attendance: 19,289.

Referee: Mr. K. E. Walker (Maidstone).

SATURDAY, 29th NOVEMBER, 1969

Lost to Preston North End (away) 3—1.

Team: Downsborough; Thomas, Trollope; Butler, Burrows, Harland; Heath, Smart, Horsfield, Noble, Jones. Sub. Dawson.

Scorer: Smart.

Attendance: 9,065.

Referee: Mr. D. Lyden (Birmingham).

FOOTBALL COMBINATION CUP

SATURDAY, 22nd NOVEMBER, 1969

Drew with Swansea Town (away) 1—1.

Team: Jones; Dawson, Fry; Handrick, Blick, Bailey; Hubbard, Penman, Down, Dangerfield, Porter.

Scorer: Porter.

Referee: Mr. W. S. Lambert (Barry).

FOOTBALL COMBINATION

SATURDAY, 29th NOVEMBER, 1969

Lost to Tottenham Hotspur (home) 4—1.

Team: Jones; Allen, Fry; Handrick, Blick, Bailey; Moss, Penman, Down, Hubbard, Porter.

Scorer: Porter.

Referee: Mr. A. Sandford (Winchester).

HELLENIC LEAGUE

SATURDAY, 22nd NOVEMBER, 1969

Lost to Thame (away) 5—2.

Team: Stone; Ackling, Woodfield; Aldworth, Claypole, Dakin; Moss, Stroud, Gleed, Boyd, Marsh.

Scorers: Gleed, Boyd.

SATURDAY, 29th NOVEMBER, 1969

Beat Henley (home) 2—0.

Team: Grzadwoski; Mason, Jellings; Aldworth, Claypole, Dakin; Kale, Stroud, Gleed, Boyd, Marsh.

Scorer: Stroud, 1 own goal.

Our thanks to Mr. E. C. Chandler

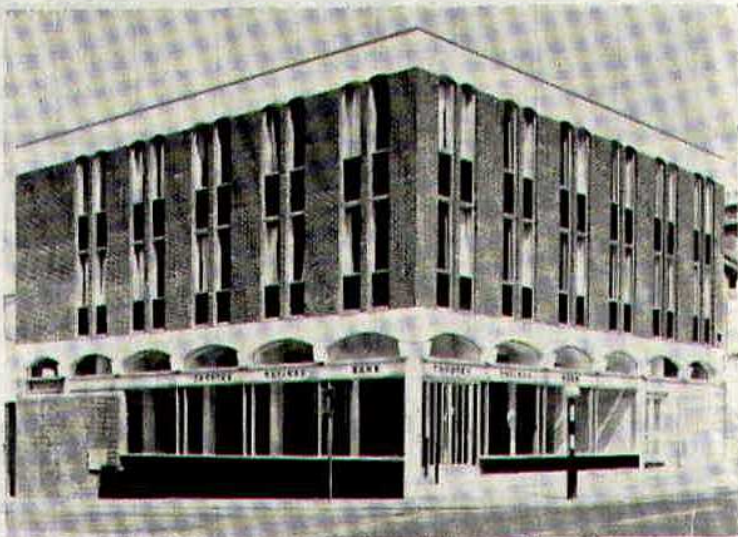
The above gentleman this season completes fifty years of service to Swindon Town F.C. as a steward or gateman.

Immediately after World War I he offered his services in a voluntary capacity to the head steward — Mr. Harry Ann (what a great character and worker he was), and has acted in one form or other right to the present time. He fulfilled almost every position, and in the early fifties (when the Club went through a very difficult period) he had the arduous task of gateman at the officials entrance, a job he carried out most conscientiously. The present head steward, Mr. Harris, has a very high opinion of Mr. Chandler, and is anxious to retain him but ill-health may prevent him continuing.

We not only congratulate Mr. Chandler on his wonderful record, but thank him for his loyalty and work. It is such men as this who have built Swindon Town F.C. and its great tradition. In the case of Mr. Chandler this will continue, his son has been a gateman at the County Ground since 1946, and his grandson since 1961. Surely that must be unique — three generations working for our Club — thank you, gentlemen.

T RUSTEE
S AVINGS
B ANK

93 Commercial Road
Swindon



Facilities include

- CURRENT ACCOUNT SERVICE
- 24 HOUR CASH DISPENSER
- T.S.B. UNIT TRUST
- CONTRACTUAL SAVINGS SCHEME
(giving substantial Tax benefits)

**INTEREST 7% IN THE
SPECIAL INVESTMENT DEPT.**

Hatton's Newsagency

A. J. D. & N. J. Woodhouse

Newsagents :: Tobacconists
Confectioners

Agents for Wessex School of Motoring
Booking Agents for Rimes Coaches

6 REGENT CIRCUS (near G.P.O.)
Telephone Swindon 22731

BRETTS

PET and GARDEN SUPPLIES

32-33 Commercial Road
and
6 Cromwell Street Swindon

THE PORK SHOP

(Swindon Bacon Curing Co. Ltd.)

Specialists in

Bacon - Pork - Cooked Ham

50 FLEET STREET SWINDON
Telephone 22122

J. WILMER

Coal Merchants

St. Margaret's Road Swindon

Telephone 22535

SOUTHERN LAUNDRY CO. LTD.

Launderers and Dry Cleaners

HAYDON STREET SWINDON
Telephone 4161

At Your Service

A. E. LUDLOW LIMITED

Wholesale Fruit and Potato Merchant

COLBOURNE STREET
SWINDON WILTSHIRE
Telephone Swindon 3583

We deliver Fresh Fruit, Vegetables
and Potatoes daily—**Wholesale Only**

FOR ALL YOUR ANGLING NEEDS.
CONSULT

Frank Woodward

Swindon's Fishing Tackle Specialist

25 HAVELOCK STREET SWINDON
Telephone 3879

For Paints of Good Quality

H. S. Hodges & Sons

(SWINDON) LTD.

Cricklade Road Swindon

Telephone 22422

Dulux, Brolac, Valspar, Wallcharm, etc.

24 hour Delivery
Service -

YOUR COMPLETE JANITORIAL SERVICE

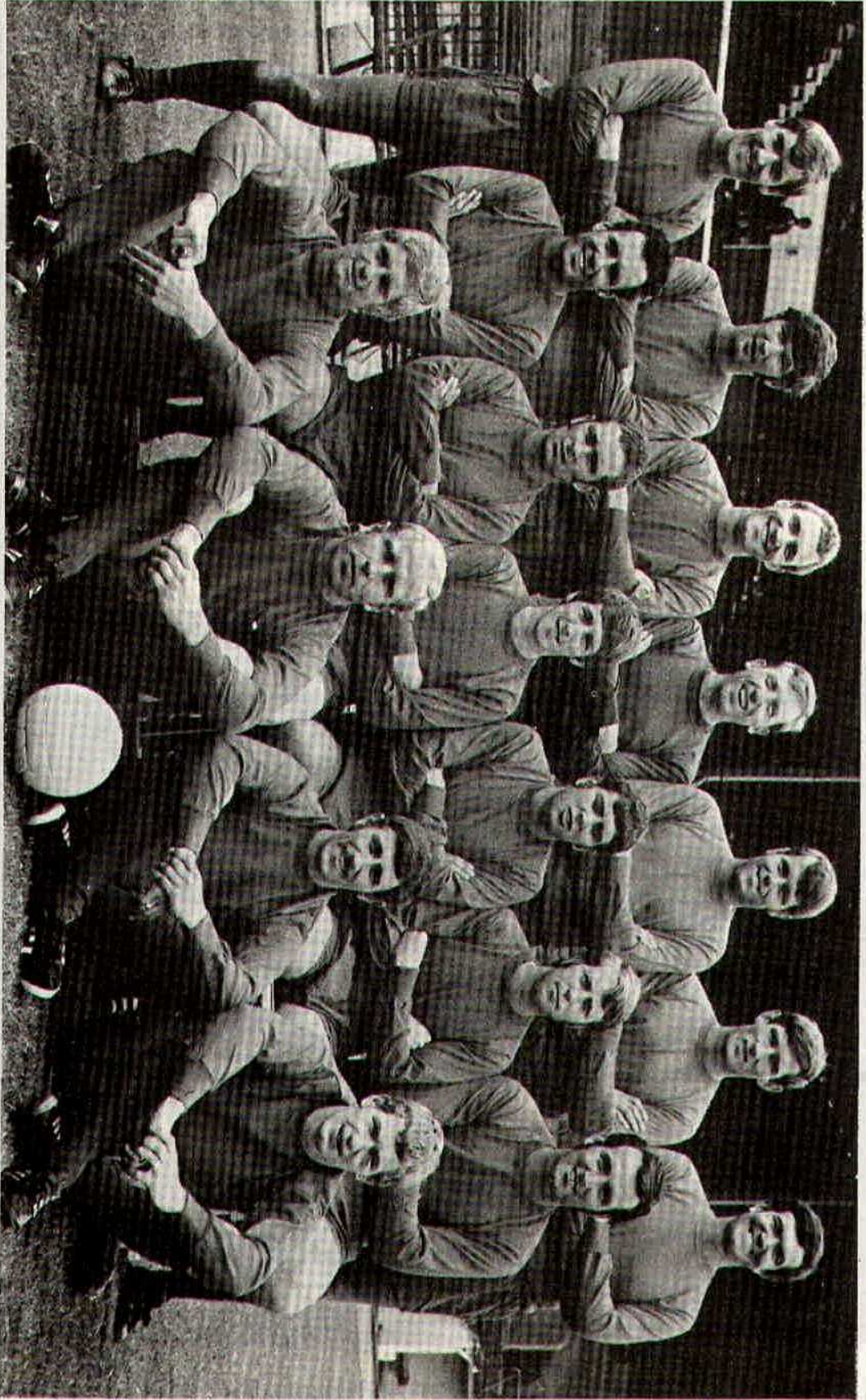
Wilts Cleaning Supply Service

Kembrey Warehouse Rear 255 Cricklade Road
SWINDON

Telephone 21012

Represented by G. ALEXANDER
Telephone Swindon 27833

Our visitors Bristol City



HARRY LUNN

(Ex NOTTS COUNTY, PORTSMOUTH and SWINDON TOWN F.C.)

Fish Bar and Restaurant
27-28 COMMERCIAL ROAD SWINDON

RESTAURANT open 9 a.m. to 10 p.m. for

Snacks - Lunches - High Teas - Evening Meal

FISH BAR open Mid-day and Evenings until 11 p.m.

HULFORD MOTORS LIMITED

SELF DRIVE HIRE

Fleet of 1969/8 Fords Escorts De-Luxe
Cortinas De-Luxe Cortinas 1600 Estate
(Bench Seat Column Change) — Zephyr V4s

SHRIVENHAM ROAD

(200 yards from Football Ground)

Telephone 4934

Large Car Park Available

COWLEY BROS. (Wroughton) LTD.

BUILDERS OF MODERN ATTRACTIVE
HOUSES and BUNGALOWS

Developments at

SWINDON

WROUGHTON

BADBURY

Office

28 NEWPORT STREET
SWINDON

Telephone Swindon 6870

Reserved for British Rail



Key of the Board

First Section

A—Arsenal v. Southampton
B—Crystal Palace v. Derby County
C—Everton v. Liverpool
D—Leeds United v. Wolverhampton W.
E—Manchester United v. Chelsea
F—Nottingham Forest v. Sheffield Wed.
G—Sunderland v. Ipswich Town
H—Albion v. Burnley
I—West Ham Utd. v. Manchester City
J—Birmingham City v. Huddersfield T.
K—Blackburn Rovers v. Aston Villa
L—Blackpool v. Carlisle United
M—Cardiff City v. Watford
N—Charlton Athletic v. Bolton Wanderers
O—Hull City v. Millwall
P—Norwich v. Middlesbrough
Q—Portsmouth v. Preston North End
R—Queen's Park Rangers v. Oxford Utd.
S—Sheffield United v. Leicester City
T—Aldershot v. Bristol Rovers

Second Section

A—Bangor City v. York City
B—Barnet v. Sutton United
C—Bradford City v. Lincoln City
D—Brighton & H.A. v. Walsall
E—Gillingham v. Tamworth
F—Hartlepool v. Wrexham
G—Hendon v. Brentwood
H—Hillingdon v. Luton Town
I—Newport County v. Hereford
J—Northampton v. Exeter City
K—Oxford City v. Swansea
L—Peterborough Utd. v. Plymouth A.
M—Port Vale v. Tranmere Rovers
N—Rotherham United v. Workington
O—Shrewsbury Town v. Mansfield Town
P—South Shields v. Oldham Athletic
Q—Bath City v. Crawley
R—Cambridge United v. Romford
S—Dover v. Nuneaton Borough



Huddersfield Town full back Clarke foils Don Heath with a well timed tackle.



Michael Drelmbg '69

**FRANK
BURROWS**



Suppliers to the Swindon Team
MAY WE SUPPLY YOU?



EARLE

of Chippenham Limited

MAIN

FORD

DEALERS

COCKLEBURY ROAD CHIPPENHAM

Telephone 3255

H. HIBBERD LIMITED

FOR YOUR EARTH-MOVING EQUIPMENT

Plant Hire Contractors



40 NEWPORT STREET SWINDON

Telephone Swindon 6125

Football Combination

Fixture List

1969

August

| | | |
|-------------------------|-----|-----|
| 9 Southampton | (H) | 2—2 |
| 16 Swansea Town | (A) | 0—1 |
| 23 Queen's Park Rangers | (H) | 1—4 |

September

| | | |
|-----------------|-----|-----|
| 4 Oxford United | (A) | 2—0 |
| 6 Bristol City | (H) | 1—2 |
| 17 Cardiff City | (A) | 3—2 |
| 20 Arsenal | (H) | 1—2 |
| 27 Luton Town | (A) | 0—2 |

October

| | | |
|-------------------|-----|-----|
| 4 Reading | (H) | 1—2 |
| 7 Bristol Rovers | (A) | P |
| 11 Ipswich Town | (A) | 1—0 |
| 21 Bristol City | (A) | 2—7 |
| 25 Crystal Palace | (H) | 1—0 |

November

| | | |
|----------------------|-----|-----|
| 8 Plymouth Argyle | (H) | 3—1 |
| 15 Crystal Palace | (H) | 1—2 |
| 22 Swansea Town | (A) | 1—1 |
| 29 Tottenham Hotspur | (H) | 1—4 |

December

| | | |
|-----------------------|-----|-------|
| 8 Peterborough United | (A) | |
| 13 Leicester City | (H) | |
| 17 Plymouth Argyle | (A) | |
| 20 West Ham United | (A) | |
| 27 Swansea Town | (H) | |

1970

January

| | | |
|-----------------|-----|-------|
| 17 Gillingham | (A) | |
| 20 Cardiff City | (H) | |
| 24 Chelsea | (H) | |
| 27 Arsenal | (A) | |

February

| | | |
|-------------------|-----|-------|
| 3 Arsenal | (H) | |
| 7 Fulham | (H) | |
| 10 Bristol Rovers | (H) | |
| 17 Walsall | (A) | |
| 24 Northampton | (A) | |

March

| | | |
|-------------------|-----|-------|
| 7 Birmingham City | (H) | |
| 11 Crystal Palace | (A) | |
| 18 Norwich City | (A) | |
| 21 Bristol Rovers | (A) | |

April

| | | |
|----------------------|-----|-------|
| 4 Bournemouth & B.A. | (H) | |
|----------------------|-----|-------|



Heath



Penman

| Name | Appearances | | Goalscorers | |
|-------------|-------------|-----------------|-------------|-----------------|
| | Foot. Comb. | Foot. Comb. Cup | Foot. Comb. | Foot. Comb. Cup |
| Price | 1 | | | |
| Dawson | 6 | 2 | | |
| Fry | 11 | 3 | | |
| Desmeules | 7 | | | |
| Blick | 13 | 3 | | |
| Handrick | 13 | 3 | 1 | |
| Heath | 4 | | | |
| Penman | 9 | 1 | 1 | |
| Down | 13 | 3 | 6 | |
| Dangerfield | 12 | 2 | 8 | 1 |
| Moss | 4 | 1 | | 1 |
| Bailey | 8 (2) | 3 | | |
| Grzadowski | 2 | | | |
| Hubbard | 12 | 3 | | |
| Jones (R) | 10 | 3 | | |
| Allen | 7 | 2 | | |
| Jones (C) | 1 | | | |
| Wetson | 1 | 1 | | 1 |
| Claypole | 7 | 1 | | |
| Porter | 2 | 2 | 1 | 1 |

(Playing as substitute in brackets)

AKERS GARAGE LIMITED

THE STREET MOREDON SWINDON WILTSHIRE

Telephone Swindon 3457/8

main dealer for
VAUXHALL/BEDFORD
and
**Parts and Accessories
Sales and Service**

Showrooms open
MONDAY to FRIDAY — 8 a.m. to 8 p.m.

SATURDAY — Closed 7 p.m.

SUNDAYS — 10 a.m. to 2 p.m. for Petrol and Viewing



MODERN LIVING IN EXPERIENCED HANDS

Wilson homes are the result of over 60 years experience in house building. The Company Architect and his design team are always researching into the ever changing requirements of home buyers, to give them better designed homes, which are easy to run, easy to maintain and comfortable to live in.



All our houses and bungalows are built to the stringent specification of the National House Builders Registration Council who will guarantee your home for 10 years.

Visit a Wilson Show Home and you will see for yourself why Wilson's have such a reputation in giving value for money.

WILSON

(Swindon) LTD., 90-92 Commercial Road, Swindon Telephone 6361 (3 lines)

seating manufacturers for Stadium Seats Ltd

- * Heavy, medium and light steel fabrication
- * Custom made production line equipment
- * Ancillary work for industry and the building trade

FAST EFFICIENT SERVICE BY



MARTYN LYNSHAW LTD

BOUNDARY WORKS - STRATTON ROAD - SWINDON - WILTS

Telephone 21844

spectator seating in high density polyethylene

- * Supplied to over 36 Football League clubs
- * Any colour. No maintenance
- * Industrial seats for the food, electronics and pharmaceutical industries
- * Largest supplier of spectator and industrial seating in Europe

STADIUM SEATS LTD

STRATTON ROAD - SWINDON - WILTS Telephone 21844